



Protecting Idaho's Timber Since 1905

# Report of the Chief Fire Warden

## OFFICERS AND MEMBERS OF THE CLEARWATER-POTLATCH TIMBER PROTECTIVE ASSOCIATION, INC.

I am pleased to submit the annual report for January 1, 2012 to December 31, 2012. Included is the fiscal year report covering revenues and expenses for the period July 1, 2011 to June 30, 2012.

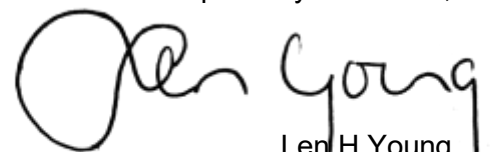
The Association had a busy field season with many C-PTPA employees working very hard in a professional manner to maintain a strong initial attack presence for our landowners who we represent.

The Steep Corner Fire was an unfortunate event to the Association's safety record which brought to our attention changes on how we deal with complex fire suppression in the future. The various investigations for the Steep Corner Fire had many employees and the community we served for over 100 years wondering whether or not the Clearwater-Potlatch Timber Protective Association will exist as a Forest Protective District. Chief Fire Warden Howard Weeks postponed his retirement in the fall of 2012 and with the help of his staff got through all negative publicity and criticism on how we have suppressed fires for over 100 years.

As we move into the 2013 season, I feel that all the C-PTPA employees are willing to face the future challenges ahead of them proving once again how resourceful and productive this organization is for the communities that we serve. I have heard many good comments about the Association's reputation in the Clearwater County area during my 3 weeks of employment as the new Chief Fire Warden. The C-PTPA employees are very enthusiastic and loyal to the Association's mission statement.

I would like to thank the C-PTPA employees, forest industry, private landowners, and interagency cooperating agencies for their strong support in 2012. I look forward to a very bright future for the Association as their new leader.

Respectfully submitted,



Len H Young  
2013 Chief Fire Warden  
C-PTPA



## OFFICERS

Rich McMillan, President  
Don Konkol, Vice President  
Howard Weeks, Secretary-Treasurer  
Howard Weeks, Chief Fire Warden  
Sharon Larson, Asst. Secretary-Treasurer

## DIRECTORS

|                  |                                |
|------------------|--------------------------------|
| Rich McMillan    | Potlatch Corporation           |
| Don Konkol       | Tri-Pro Forest Products        |
| Roger Jansson    | State of Idaho                 |
| Corby Finke      | Finke Logging, Inc.            |
| Greg Danly       | Empire Lumber Company          |
| Brent Richardson | Small Landowner Representative |

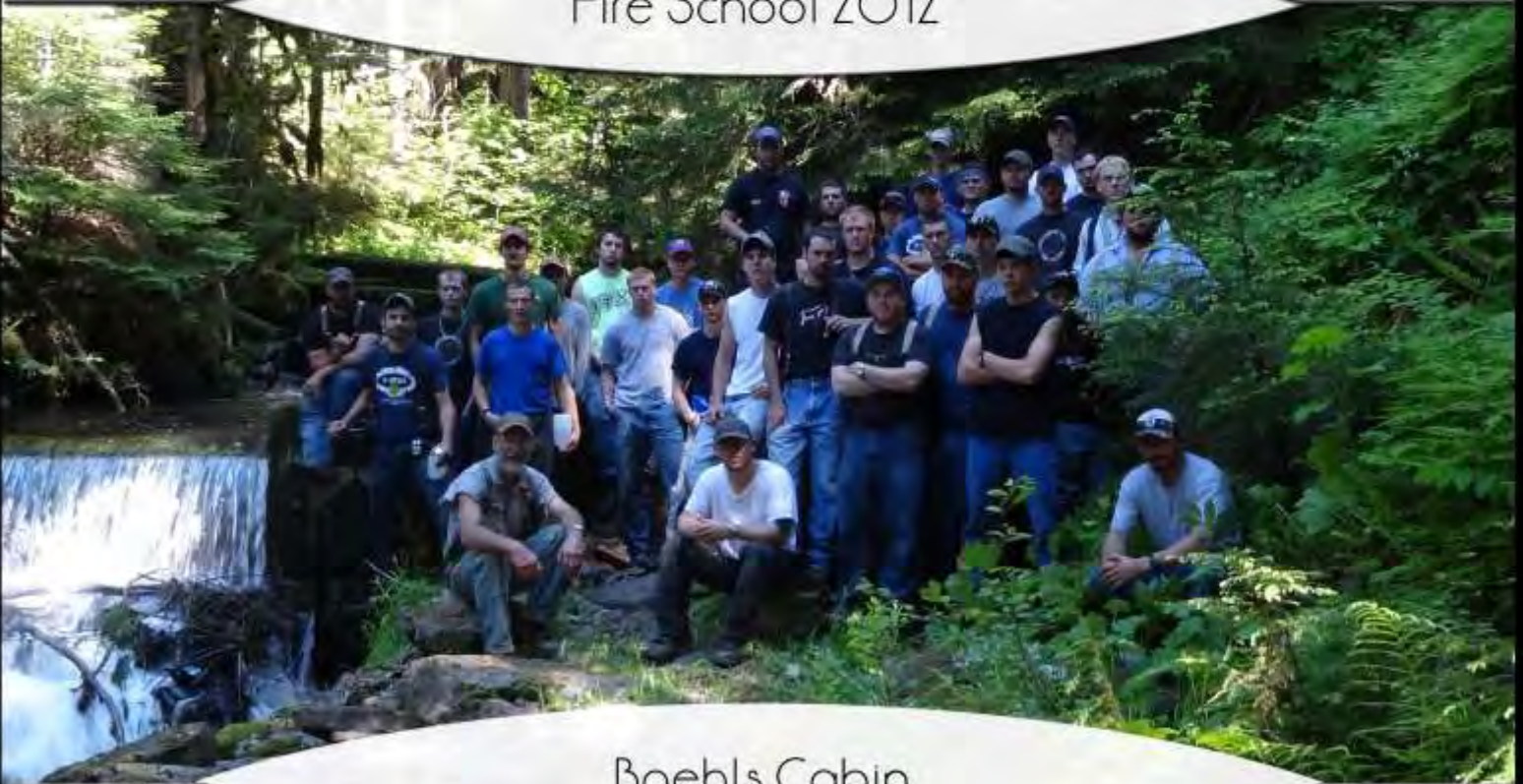
## FIRE COMMITTEE

Directors serve as Fire Committee

The Clearwater Timber Protective Association and the Potlatch Timber Association were separately organized in the early 1900's. In 1966, these two entities merged to form the Clearwater-Potlatch Timber Protective Association, a non-corporate entity. Subsequently, on July 16, 1982, the Association completed filings for incorporation under the Idaho Nonprofit Corporation Act and became the Clearwater-Potlatch Timber Protective Association, Inc.

The Association is controlled by forest landowners belonging to its membership and subject to the provisions of the Idaho Forestry Act. The Association is primarily responsible for the conservation and protection of the forests and forestland within the State of Idaho; specifically, the Palouse, Potlatch, and North Fork of the Clearwater River drainages.

## Fire School 2012



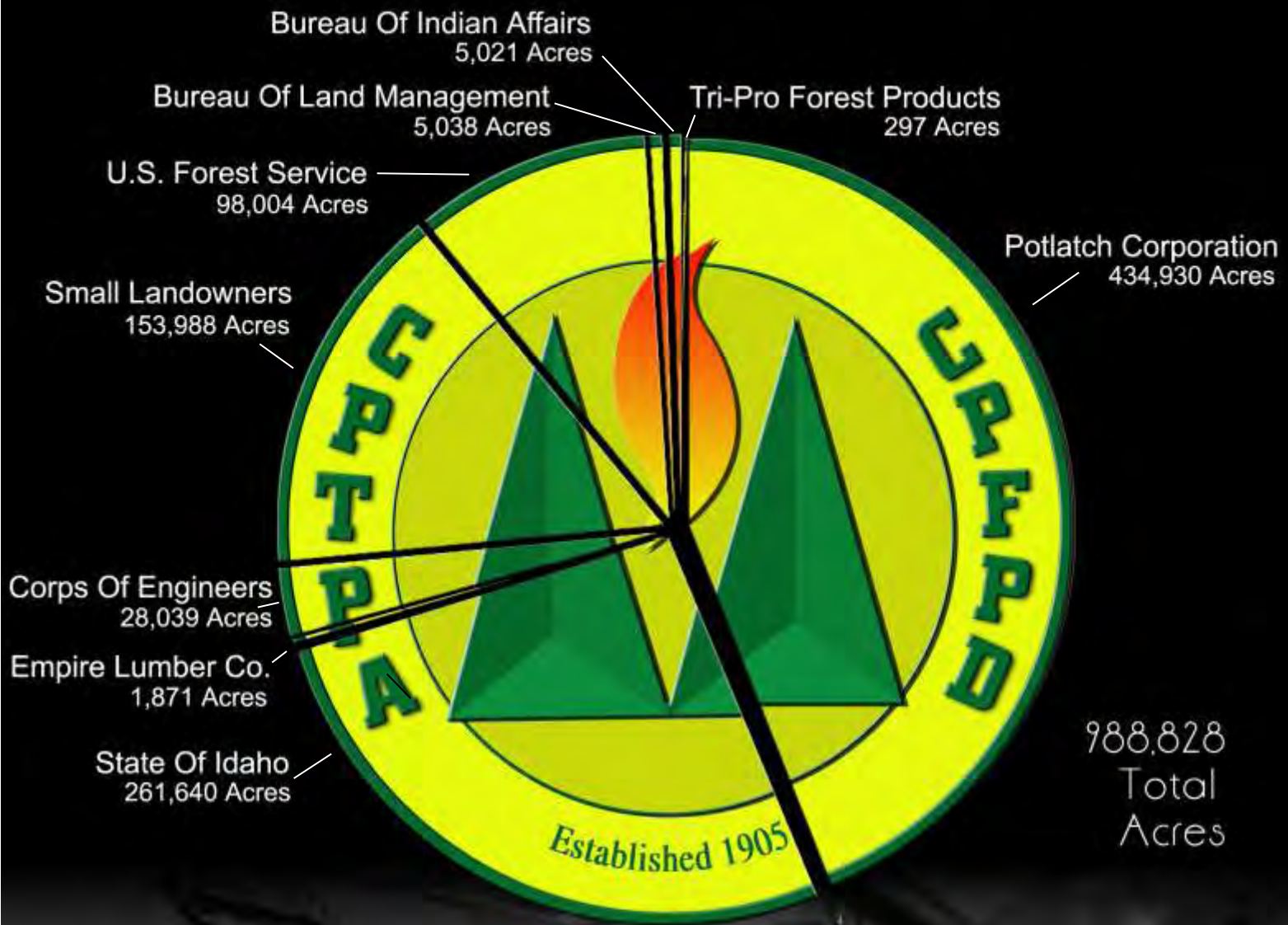
## Boehls Cabin

## AUDIT COMMITTEE

Greg Danly, Chairman  
Empire Lumber Company, State of Idaho  
Potlatch Corporation, Tri-Pro Forest Products

## LEGISLATIVE COMMITTEE

State of Idaho



Acres  
and Landowners

# Mission Statement

---

**The mission of the C-PTPA is to provide a high level of fire protection for our members' valuable resources.**

The hazard management program is designed to reduce the fire hazard created by harvesting timber. Prescribed burning provides a relatively controlled method of reducing potential fire growth and provides a suitable environment for tomorrow's trees to grow.



Cox Creek Prescribed Burn, Spring 2012

An educated fire fighter is a safer fire fighter. C-PTPA fire crews are trained annually in the basic skills it takes to safely extinguish fires. The Association participates with other agencies to train loggers and rural fire departments to draw on other cooperators in high fire situations. Our efforts do not stop with today's workforce; we target tomorrow's by teaching kids the dangers and uses of fire.



Steep Corner Fire, August 2012

The C-PTPA maintains an administrative complex in Orofino and three satellite fire camps strategically located in our protection area. In an effort to keep unwanted fires as small as possible, four separate facilities are maintained to reduce arrival time on fires. Quick, efficient initial attack has been and will remain a basic premise of the C-PTPA.

# Fire Season 2012

The 2012 fire season for the Clearwater-Potlatch Timber Protective Association was characterized as below normal in severity and in suppression activity. Cool temperatures in the month of June combined with precipitation towards the end of the month resulted in only 1 lightning fire. July saw a steady increase in temperatures, and as a result, increased fire activity. July produced a total of 20 fires, 14 of those being lightning.

The month of August produced 9 fires, 2 of which were lightning caused. On the 10<sup>th</sup> of August, the season's most significant fire happened in a logging strip in the Steep Creek drainage. Association crews, along with a U.S. Forest Service engine crew and local loggers, engaged the fire in steep, rugged terrain. On the 12<sup>th</sup> of August, a U.S. Forest Service engine crew member, Anne Veseth, was struck and killed by a snag while working on the fire. Due to the tragic accident and the complexity of the fire, a Type 2 Incident Management team was brought in to manage the fire. The team, led by Incident Commander Shawn Pearson, took command of the fire on August 14<sup>th</sup>. Pearson's team managed the fire until it was transitioned to Rod Week's Type 3 Incident Management team on August 23<sup>rd</sup>. The Type 3 team transitioned the fire back to the C-PTPA on August 27<sup>th</sup>, with daily patrols until the fall rains.

The months of September and October remained warmer than normal, with September producing 7 fires, 6 of which were lightning.

| The Idaho Department of Lands Standard of Protection requires State Districts to meet the following standards: | The Clearwater-Potlatch Timber Protective Association has refined the IDL standards for the fuels and resources of our protective district to: | C-PTPA 2012         |
|--|--|---------------------|
| ◆ Fires should be contained to less than 10 acres 94% of the time  | ◆ Fires should be contained to less than 10 acres 97% of the time  | 2 Fires<br>95%      |
| ◆ IDL should have no more than 34 human caused fires   | ◆ C-PTPA should have no more than 24 human caused fires  | 21 Fires<br>88%     |
| ◆ IDL should burn no more than 864 acres   | ◆ C-PTPA should burn no more than 380 acres  | 416.5 Acres<br>110% |

This year, C-PTPA had 21 human caused fires for 88% of the allowable standard and burned 416.5 acres for 110% of the allowable standard. The human caused fires included campfires, debris burns, equipment use, children and miscellaneous.

| <b>MANNING CLASS<br/>FOR TYPICAL 77 DAY FIRE SEASON</b> |     |          |         |         |           |         |            |
|---|-----|----------|---------|---------|-----------|---------|------------|
| Month   | Low | Moderate | High -3 | High +3 | Very High | Extreme | Total Days |
| July  | 1   | 3        | 19      | 8       | 0         | 0       | 31         |
| August  | 0   | 0        | 2       | 26      | 3         | 0       | 31         |
| September   | 0   | 0        | 0       | 14      | 1         | 0       | 15         |
|   | 1   | 3        | 21      | 48      | 4         | 0       | 77         |

# Retardant Aircraft



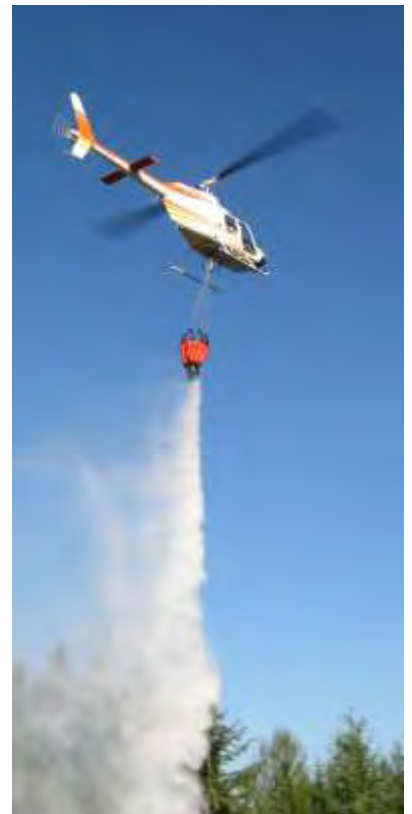
During the 2012 fire season, the Association contracted a Bell 206 L-3 Helicopter on 10-minute standby from Hillcrest Aviation. Through a cooperative agreement with the Idaho Department of Lands, two single engine air tankers (SEATS) were available to the Association. The 802F Air Tractor fixed wing aircraft, stationed in Grangeville, Idaho, are capable of delivering 800 gallons of retardant. They were used on one C-PTPA fire.

The C-PTPA helitack program, which consists of three-person modules at predetermined locations, was continued in 2012. The helicopter can transport helitack modules to fires where they can quickly begin suppression activities. Once on the scene, the helicopter can attach a water bucket and begin dropping water from a nearby pond. The aircraft is capable of slinging in a 72 gallon water blivet or other cargo to aid firefighters in inaccessible locations. This program, assisted by the retardant aircraft, has proven to be an efficient, effective means of wildfire suppression.

The helicopter was used for a total of 110 hours that included:

- presuppression – 41.4hours
- fire suppression – 68.6 hours

Water drops amounted to 49,236 gallons for a delivered cost per gallon of \$2.30 The helicopter was contracted for 110 hours of guaranteed flight time during the 89 day availability period.



## Cooperative Agreement

A cooperative agreement continues to this date between the Association and the State Board of Land Commissioners through the Director of the Idaho Department of Lands. The purpose of this agreement is to clarify the forest protection relationship between the Association and the Idaho Department of Lands. It defines the reimbursable emergency fire suppression expenditures that may be incurred by the State and Association. In addition, the agreement addresses the following: (1) fire protection plans, (2) fire management, (3) reports and records, (4) budgets, (5) administrative matters, (6) payments, (7) duration, and (8) limited obligation by the State.

# Dworshak Project - Added Protection

---

The contract with the Corps of Engineers to provide additional protection services was continued during the 2012 fire season. This agreement provides for boat patrols, aerial patrols, fire prevention, prescribed fire and maintenance efforts in the campsites. Not renewed for 2012 was an additional contract negotiated in 1993 with the C-PTPA accepting the responsibility of preparing firelines in over 100 campsites along the 53-mile reservoir.

In 2012, there was a tenth of an acre wildfire that required suppression efforts on Corps of Engineers property. The marine patrol continued prevention and detection efforts in 2012 and early evening aerial patrols were continued on high activity days and holidays.

The draw down of the reservoir has reduced the visitor use of the mini camps, while increasing the number of fires being built outside of fire grills and established campgrounds. The fact that fires are being ignited below the vegetation line encourages visitors to assume there is no danger, so they are more inclined to build fires larger and leave them burning.

## Hazard Management

---

The operating agreement between the State of Idaho and the Clearwater-Potlatch Timber Protective Association for the management of fire hazards resulting from commercial harvest was continued in 2012.

## Equipment Replacement and Improvements

---

During the calendar year 2012, the Association acquired the following:

- (1) Caterpillar 320DFMHW
- (6) Yamaha Grizzly 450's
- 1987 GMC Cab and Chassis

During the calendar year 2012, the Association sold the following:

- 2008 Ford F250
- (3) 2006 Yamaha Kodiak 450



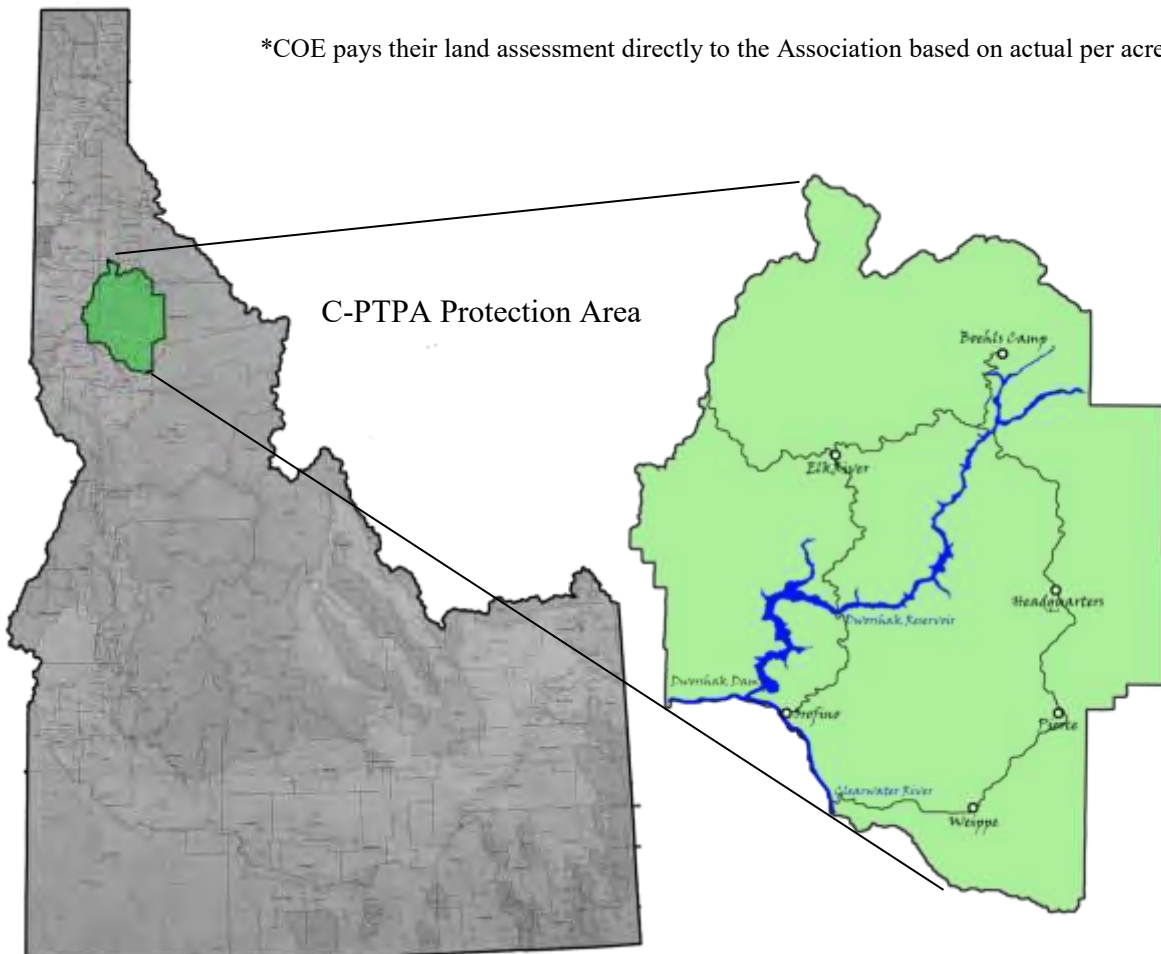


# Acreage and Assessment of Members

7/1/11 to 7/1/12

| <b>MEMBER</b>                | <b>ACREAGE</b> | <b>60 CENT ASSESSMENT</b> |
|------------------------------|----------------|---------------------------|
| Empire Lumber Company        | 1,871          | \$1,123                   |
| Tri-Pro Forest Products      | 297            | \$178                     |
| Potlatch Corporation         | 434,930        | \$260,958                 |
| State of Idaho               | 261,640        | \$156,984                 |
| *Corps of Engineers          | 28,039         | \$36,894                  |
| 1ST ASSESSMENT LEVIED 7/1/11 | <b>726,777</b> | <b>\$456,137</b>          |

\*COE pays their land assessment directly to the Association based on actual per acre cost.



# Balance Sheet - June 30, 2012

---

## Assets

### Current Assets

|                          |                  |
|--------------------------|------------------|
| Cash                     | \$722,566        |
| Receivables              | \$112,160        |
| Unbilled work in process | \$71,714         |
| Inventory                | \$38,070         |
| Prepaid expenses         | \$53,410         |
| Total current assets     | <u>\$997,920</u> |

**Property and Equipment**, net of accumulated  
deprecia. on of \$2,619,711

\$661,926

Total assets

\$1,659,846

## Liabili. es and Net Assets

### Current Liabili es

|                              |                  |
|------------------------------|------------------|
| Accounts payable             | \$89,504         |
| Accrued interest payable     | \$644            |
| Accrued wages                | \$0              |
| Accrued vaca on              | \$65,428         |
| Accrued re ee insurance      | \$54,293         |
| Deferred revenue             | \$37,512         |
| Note payable, current por on | \$32,131         |
| Total current liabili es     | <u>\$279,512</u> |

### Long-Term Liabili es

|   |            |
|---|------------|
| Note payable, net of current maturities | <u>\$0</u> |
| Total long term liabili es              | <u>\$0</u> |

Total liabili es

\$279,512

### Net Assets

|                        |                    |
|------------------------|--------------------|
| Unrestricted           | \$1,358,980        |
| Temporarily restricted | <u>\$21,354</u>    |
| Total net assets       | <u>\$1,380,334</u> |

Total liabili es and net assets

\$1,659,846

# 2012 Fires

| Date          | Fire #    | Fire Name           | Area | Lat         | Long         | Acres         | Damages           | Fuel Description            | Owner    | Cause          | Cost                  |
|---------------|-----------|---------------------|------|-------------|--------------|---------------|-------------------|-----------------------------|----------|----------------|-----------------------|
| 12/8/11       | 99001     | Lakeview            | ORO  | N 46 29.412 | W 116 15.347 | 0.1           | \$0.00            | Low Brush and Forbes        | PVT      | Debris Burning | \$135.80              |
| 4/10/12       | 99002     | Fraser Cemetery     | HQ   | N 46 22.452 | W 116 2.830  | 8             | \$0.00            | Annual Grasslands & Forbs   | PVT      | Miscellaneous  | \$139.42              |
| 5/14/12       | 99003     | Log Power RX        | ER   | N 46 57.366 | W 116 15.552 | 80            | \$2,900.00        | Medium Slash                | IDL      | Debris Burning | \$26,057.71           |
| 6/2/12        | 99004     | Crazy Mike          | ER   | N 46 37.248 | W 116 11.592 | 0.1           | \$0.00            | Annual Grasslands & Forbs   | PVT      | Debris Burning | \$669.18              |
| 6/28/12       | 99005     | Anthony Peak        | ER   | N 46 58.754 | W 116 12.545 | 0.1           | \$0.00            | Natural Heavy Down & Dead   | USFS     | Lightning      | \$3,055.54            |
| 7/4/12        | 99006     | Gold Creek          | ER   | N 46 47.050 | W 116 01.962 | 0.1           | \$0.00            | Natural Heavy Down & Dead   | Potlatch | Lightning      | \$2,287.12            |
| 7/5/12        | 99007     | 3 Mile Baler        | HQ   | N 46 19.660 | W 115 57.761 | 3.5           | \$0.00            | Perennial Grasslands        | PVT      | Equipment Use  | \$1,320.52            |
| 7/6/12        | 99008     | Swede South         | HQ   | N 46 22.533 | W 115 46.716 | 0.1           | \$0.00            | Heavy Slash                 | Potlatch | Miscellaneous  | \$1,758.66            |
| 7/6/12        | 99009     | Greer Upper Switch  | HQ   | N 46 24.323 | W 116 10.368 | 0.1           | \$0.00            | Long Needle Pine with Grass | PVT      | Lightning      | \$808.41              |
| 7/7/12        | 99010     | Greer Face          | ORO  | N 46 24.358 | W 116 10.887 | 2.5           | \$0.00            | Annual Grasslands & Forbs   | PVT      | Lightning      | \$20,175.85           |
| 7/9/12        | 99011     | Squaw Creek         | ER   | N 46 48.046 | W 116 14.940 | 0.1           | \$0.00            | Medium Slash                | Potlatch | Miscellaneous  | \$1,033.17            |
| 7/10/12       | 99012     | Butterfield         | ER   | N 46 45.424 | W 116 18.525 | 0.1           | \$0.00            | Low Brush and Forbes        | Potlatch | Lightning      | \$2,088.29            |
| 7/10/12       | 99013     | Round Butter        | ER   | N 46 45.835 | W 116 18.663 | 0.5           | \$0.00            | Natural Heavy Down & Dead   | USFS     | Lightning      | \$8,940.93            |
| 7/12/12       | 99014     | Bull Buncher        | ER   | N 46 45.033 | W 116 12.115 | 0.1           | \$0.00            | Medium Slash                | Potlatch | Equipment Use  | \$767.50              |
| 7/17/12       | 99015     | Reservoir 45        | BLS  | N 46 50.799 | W 115 51.690 | 0.1           | \$0.00            | Pine with Needle Understory | COE      | Lightning      | \$1,200.88            |
| 7/19/12       | 99016     | Harmony Heights     | ORO  | N 46 28.786 | W 116 7.280  | 0.1           | \$0.00            | Closed Canopy Fir           | PVT      | Lightning      | \$1,306.99            |
| 7/19/12       | 99017     | Crow Bench Shop     | ORO  | N 46 26.704 | W 116 10.021 | 0.1           | \$0.00            | Long Needle Pine with Grass | PVT      | Miscellaneous  | \$480.75              |
| 7/20/12       | 99018     | Jericho             | ER   | N 46 42.938 | W 116 07.359 | 0.2           | \$680.00          | Light Slash                 | IDL      | Lightning      | \$2,116.73            |
| 7/20/12       | 99019     | Elk Butte           | ER   | N 46 49.880 | W 116 07.397 | 0.1           | \$0.00            | Natural Heavy Down & Dead   | USFS     | Lightning      | \$2,907.45            |
| 7/20/12       | 99020     | East Shattuck       | ER   | N 46 48.940 | W 116 12.067 | 0.1           | \$0.00            | Low Brush and Forbes        | Potlatch | Lightning      | \$666.37              |
| 7/21/12       | 99021     | Park Clover         | ER   | N 46 44.552 | W 116 16.034 | 0.1           | \$0.00            | Closed Canopy Fir           | USFS     | Lightning      | \$667.90              |
| 7/24/12       | 99022     | Freezeout           | BLS  | N 47 01.131 | W 116 01.838 | 0.1           | \$0.00            | Closed Canopy Fir           | USFS     | Lightning      | \$3,218.39            |
| 7/24/12       | 99023     | Long Meadow Cr.     | ORO  | N 46 41.188 | W 116 16.666 | 0.1           | \$0.00            | Long Needle Pine with Grass | IDL      | Lightning      | \$1,421.54            |
| 7/30/12       | 99024     | Motorcross Track    | HQ   | N 46 24.687 | W 115 43.406 | 0.1           | \$0.00            | Annual Grasslands & Forbs   | PVT      | Debris Burning | \$235.37              |
| 7/31/12       | 99025     | East Twin           | HQ   | N 46 42.657 | W 115 43.406 | 0.1           | \$0.00            | Closed Canopy Fir           | Potlatch | Lightning      | \$2,123.46            |
| 8/6/12        | 99026     | Pierce Creek        | HQ   | N 46 30.216 | W 115 45.255 | 0.1           | \$0.00            | Closed Canopy Fir           | Potlatch | Lightning      | \$1,492.91            |
| 8/7/12        | 99027     | South Fork Robinson | ER   | N 46 49.283 | W 116 00.541 | 0.1           | \$350.00          | Closed Canopy Fir           | Potlatch | Lightning      | \$2,735.29            |
| 8/10/12       | 99028     | Steep Corner        | HQ   | N 46 50.200 | W 115 39.060 | 310           | \$0.00            | Heavy Slash                 | Potlatch | Equipment Use  | \$2,200,000.00        |
| 8/15/12       | 99029     | Purdue Power        | ER   | N 46 53.283 | W 116 23.008 | 0.1           | \$0.00            | Low Brush and Forbes        | IDL      | Equipment Use  | \$88.26               |
| 8/20/12       | 99030     | Teakean             | ORO  | N 46 35.100 | W 116 21.500 | 0.53          | \$0.00            | Heavy Slash                 | IDL      | Equipment Use  | \$11,084.86           |
| 8/20/12       | 99031     | Dent                | ER   | N 46 37.094 | W 116 11.010 | 0.5           | \$0.00            | Low Brush and Forbes        | PVT      | Debris Burning | \$7,037.32            |
| 8/25/12       | 99032     | Rock Skidder        | HQ   | N 46 17.721 | W 115 49.847 | 0.1           | \$0.00            | Annual Grasslands & Forbs   | IDL      | Equipment Use  | \$325.03              |
| 8/27/12       | 99033     | Radio Road          | ORO  | N 46 28.624 | W 116 14.433 | 0.25          | \$0.00            | Closed Canopy Fir           | PVT      | Miscellaneous  | \$2,137.10            |
| 8/31/12       | 99034     | Bear Creek          | HQ   | N 46 22.397 | W 115 48.786 | 0.25          | \$0.00            | Annual Grasslands & Forbs   | IDL      | Miscellaneous  | \$5,436.37            |
| 9/9/12        | 99035     | Dull Axe            | HQ   | N 46 41.120 | W 115 47.130 | 0.5           | \$0.00            | Closed Canopy Fir           | Potlatch | Lightning      | \$6,023.46            |
| 9/9/12        | 99036     | Fiddler Road        | HQ   | N 46 21.182 | W 115 57.434 | 0.1           | \$0.00            | Light Slash                 | IDL      | Lightning      | \$1,898.95            |
| 9/9/12        | 99037     | Sourdough Shadow    | ER   | N 46 48.276 | W 116 00.119 | 1             | \$850.00          | Medium Slash                | Potlatch | Lightning      | \$12,849.67           |
| 9/9/12        | 99038     | School Bus Saddle   | HQ   | N 46 43.263 | W 115 45.085 | 2             | \$0.00            | Medium Slash                | Potlatch | Lightning      | \$14,688.81           |
| 9/10/12       | 99039     | Hooligan            | BLS  | N 47 00.163 | W 115 54.174 | 0.1           | \$0.00            | Low Brush and Forbes        | Potlatch | Lightning      | \$1,656.27            |
| 9/12/12       | 99040     | East Fork Campfire  | ER   | N 46 53.028 | W 116 14.286 | 0.1           | \$0.00            | Perennial Grasslands        | Potlatch | Campfire       | \$278.76              |
| 10/2/12       | 99041     | MM 16               | ORO  | N 46 36.000 | W 116 26.691 | 0.1           | \$0.00            | Pine with Needle Understory | PVT      | Equipment Use  | \$143.26              |
| 10/8/12       | 99042     | White Doe           | ORO  | N 46 36.346 | W 116 36.346 | 0.1           | \$0.00            | Closed Canopy Fir           | IDL      | Equipment Use  | \$2,785.49            |
| 10/10/12      | 99043     | Upper Fords MM6     | ORO  | N 46 26.877 | W 116 09.055 | 4             | \$0.00            | Perennial Grasslands        | PVT      | Equipment Use  | \$5,845.97            |
| <b>Totals</b> | <b>43</b> |                     |      |             |              | <b>416.53</b> | <b>\$4,780.00</b> |                             |          |                | <b>\$2,362,091.71</b> |

|                  |   |
|------------------|---|
| Date             | Date of Fire  |
| Fire Number      | Fire Number   |
| Fire Name        | Name of Fire  |
| Area             | BLS - Boehls<br>ER - Elk River<br>HQ - Headquarters<br>ORO - Oro no |
| Lat              | Latitude  |
| Long             | Longitude   |
| Acres            | Acres Burned  |
| Damages          | Fire Damage   |
| Fuel Description | Type of Fuels Involved  |

|       |  |
|-------|--|
| Owner | Land owner   |
|       | PC - Potlatch<br>IDL - Idaho Dept. of Lands<br>COE - Corps of Engineers<br>DOT - Dept. of Trans<br>IF & G - Idaho Fish and Game<br>NM - Non member<br>USFS - U.S. Forest Service<br>BLM - Bureau of Land Management<br>PVT—Private Landowner |
| Cause | Cause of Fire  |
| Cost  | Cost of Fire   |

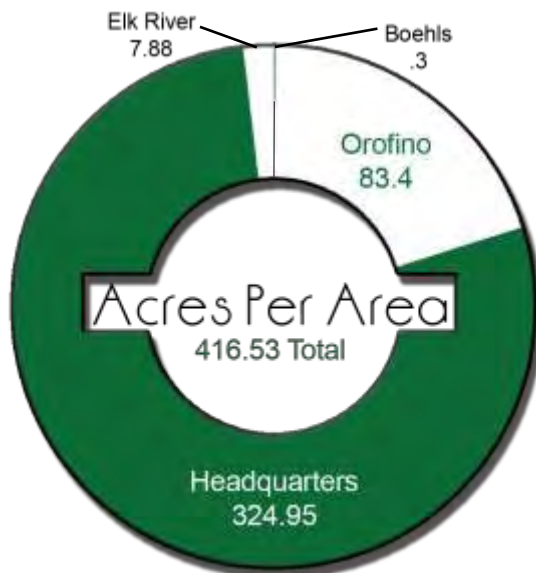
# Fire Season Information

## Fire Type By Landowner

| Landowner                 | Lightning | Campfire | Debris Burning | Equipment Use | Children | Misc.    |
|---------------------------|-----------|----------|----------------|---------------|----------|----------|
| Potlatch                  | 10        | 1        | 0              | 2             | 0        | 2        |
| Idaho Department of Lands | 3         | 0        | 1              | 4             | 0        | 1        |
| U.S. Forest Service       | 5         | 0        | 0              | 0             | 0        | 0        |
| Corps of Engineers        | 1         | 0        | 0              | 0             | 0        | 0        |
| Small Landowner           | 3         | 0        | 4              | 3             | 0        | 3        |
| <b>Totals</b>             | <b>22</b> | <b>1</b> | <b>5</b>       | <b>9</b>      | <b>0</b> | <b>6</b> |

## Fire Type By Month

| Month           | Lightning | Campfire | Debris Burning | Equipment Use | Children | Misc.    |
|-----------------|-----------|----------|----------------|---------------|----------|----------|
| December (2011) | 0         | 0        | 1              | 0             | 0        | 0        |
| April           | 0         | 0        | 0              | 0             | 0        | 1        |
| May             | 0         | 0        | 1              | 0             | 0        | 0        |
| June            | 1         | 0        | 1              | 0             | 0        | 0        |
| July            | 14        | 0        | 1              | 2             | 0        | 3        |
| August          | 2         | 0        | 1              | 4             | 0        | 2        |
| September       | 5         | 1        | 0              | 0             | 0        | 0        |
| October         | 0         | 0        | 0              | 3             | 0        | 0        |
| <b>Totals</b>   | <b>22</b> | <b>1</b> | <b>5</b>       | <b>9</b>      | <b>0</b> | <b>6</b> |

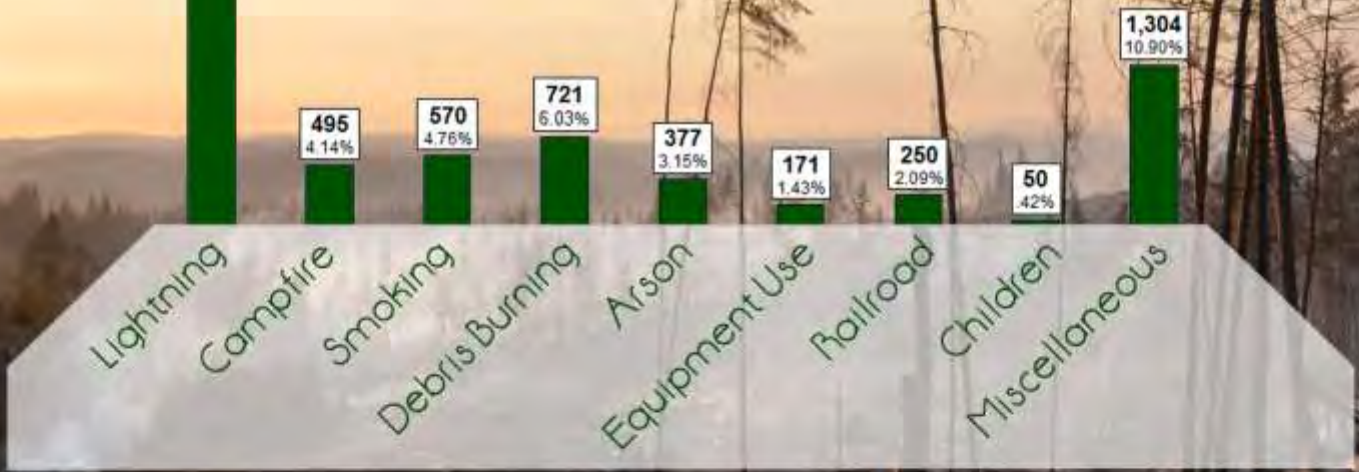
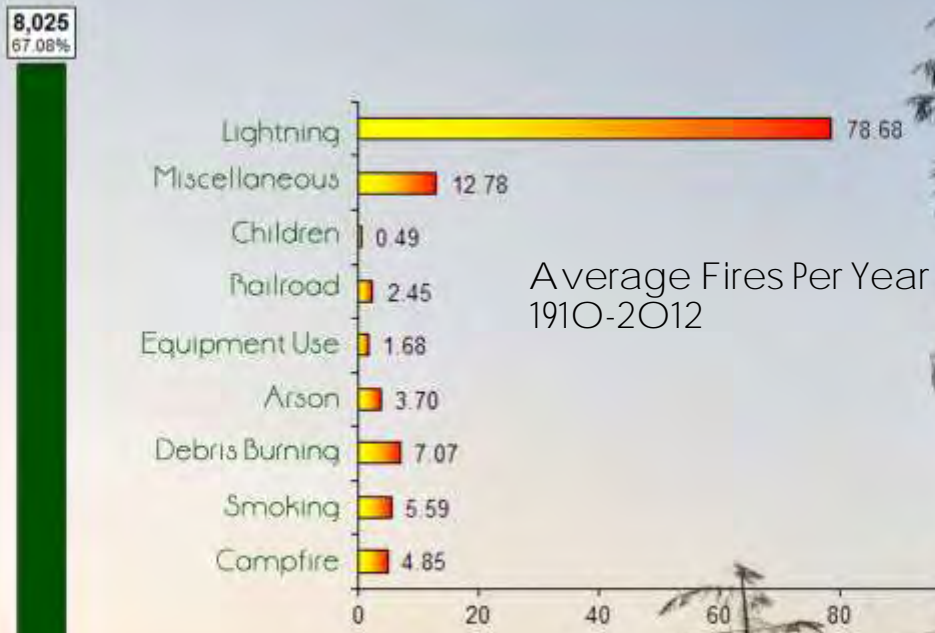


# 42 Year Fire History

| Year | Spot  |       | A Fires |       | B Fires |       | C Fires |         | D Fires |         | E Fires |       | F Fires |         | Total Fires | Total Acres |
|------|-------|-------|---------|-------|---------|-------|---------|---------|---------|---------|---------|-------|---------|---------|-------------|-------------|
|      | spot  | acres | #       | acres | #       | acres | #       | acres   | #       | acres   | #       | acres | #       | acres   |             |             |
| 1971 | 64    | 0.0   | 0       | 0.0   | 6       | 16.0  | 1       | 10.0    | 0       | 0.0     | 0       | 0.0   | 0       | 0.0     | 71          | 26.0        |
| 1972 | 180   | 0.0   | 1       | 0.0   | 9       | 17.0  | 0       | 0.0     | 0       | 0.0     | 0       | 0.0   | 0       | 0.0     | 190         | 17.0        |
| 1973 | 101   | 0.0   | 5       | 1.3   | 14      | 25.8  | 4       | 87.0    | 1       | 180.0   | 0       | 0.0   | 0       | 0.0     | 125         | 294.0       |
| 1974 | 120   | 0.0   | 4       | 1.0   | 14      | 11.3  | 3       | 83.0    | 0       | 0.0     | 0       | 0.0   | 1       | 1,150.0 | 142         | 1,245.3     |
| 1975 | 87    | 0.0   | 1       | 0.3   | 10      | 13.4  | 1       | 15.0    | 0       | 0.0     | 0       | 0.0   | 0       | 0.0     | 99          | 28.6        |
| 1976 | 107   | 0.0   | 3       | 0.8   | 5       | 16.0  | 0       | 0.0     | 1       | 100.0   | 0       | 0.0   | 0       | 0.0     | 116         | 116.8       |
| 1977 | 118   | 0.0   | 3       | 0.8   | 8       | 11.4  | 1       | 20.0    | 0       | 0.0     | 0       | 0.0   | 0       | 0.0     | 130         | 32.2        |
| 1978 | 99    | 0.0   | 0       | 0.0   | 5       | 10.0  | 1       | 20.0    | 0       | 0.0     | 0       | 0.0   | 0       | 0.0     | 105         | 30.0        |
| 1979 | 139   | 0.0   | 0       | 0.0   | 18      | 19.8  | 0       | 0.0     | 0       | 0.0     | 0       | 0.0   | 0       | 0.0     | 157         | 19.8        |
| 1980 | 42    | 0.0   | 0       | 0.0   | 2       | 4.5   | 0       | 0.0     | 1       | 100.0   | 0       | 0.0   | 0       | 0.0     | 45          | 104.5       |
| 1981 | 55    | 0.0   | 4       | 1.0   | 4       | 3.0   | 1       | 40.0    | 0       | 0.0     | 0       | 0.0   | 0       | 0.0     | 64          | 44.0        |
| 1982 | 55    | 0.0   | 3       | 0.8   | 5       | 3.4   | 0       | 0.0     | 1       | 100.0   | 0       | 0.0   | 0       | 0.0     | 64          | 104.1       |
| 1983 | 52    | 0.0   | 0       | 0.0   | 5       | 9.0   | 1       | 75.0    | 0       | 0.0     | 0       | 0.0   | 0       | 0.0     | 58          | 84.0        |
| 1984 | 151   | 0.0   | 0       | 0.0   | 17      | 12.3  | 2       | 110.0   | 0       | 0.0     | 1       | 360.0 | 0       | 0.0     | 171         | 482.3       |
| 1985 | 79    | 0.0   | 7       | 1.8   | 9       | 14.3  | 2       | 67.0    | 0       | 0.0     | 0       | 0.0   | 0       | 0.0     | 97          | 83.0        |
| 1986 | 172   | 0.0   | 0       | 0.0   | 43      | 92.3  | 10      | 176.0   | 2       | 254.0   | 1       | 427.0 | 1       | 1,438.0 | 229         | 2,387.3     |
| 1987 | 77    | 0.0   | 0       | 0.0   | 19      | 21.0  | 0       | 0.0     | 0       | 0.0     | 0       | 0.0   | 0       | 0.0     | 96          | 21.0        |
| 1988 | 97    | 0.0   | 0       | 0.0   | 15      | 28.5  | 2       | 64.0    | 2       | 228.0   | 0       | 0.0   | 0       | 0.0     | 116         | 320.5       |
| 1989 | 0     | 0.0   | 182     | 0.0   | 20      | 32.0  | 0       | 0.0     | 0       | 0.0     | 0       | 0.0   | 0       | 0.0     | 202         | 32.0        |
| 1990 | 0     | 0.0   | 90      | 4.1   | 14      | 24.3  | 0       | 0.0     | 0       | 0.0     | 0       | 0.0   | 0       | 0.0     | 104         | 28.4        |
| 1991 | 0     | 0.0   | 95      | 10.6  | 16      | 23.8  | 0       | 0.0     | 0       | 0.0     | 0       | 0.0   | 0       | 0.0     | 111         | 34.3        |
| 1992 | 0     | 0.0   | 124     | 13.7  | 25      | 38.8  | 1       | 50.0    | 0       | 0.0     | 0       | 0.0   | 0       | 0.0     | 150         | 102.5       |
| 1993 | 0     | 0.0   | 34      | 3.7   | 2       | 2.5   | 2       | 40.0    | 0       | 0.0     | 0       | 0.0   | 0       | 0.0     | 38          | 46.2        |
| 1994 | 0     | 0.0   | 234     | 30.7  | 104     | 185.1 | 9       | 144.5   | 0       | 0.0     | 0       | 0.0   | 0       | 0.0     | 347         | 360.2       |
| 1995 | 0     | 0.0   | 43      | 6.1   | 8       | 13.8  | 0       | 0.0     | 0       | 0.0     | 0       | 0.0   | 0       | 0.0     | 51          | 19.9        |
| 1996 | 0     | 0.0   | 58      | 8.3   | 17      | 20.4  | 1       | 20.0    | 1       | 230.0   | 0       | 0.0   | 0       | 0.0     | 77          | 278.7       |
| 1997 | 0     | 0.0   | 33      | 3.7   | 7       | 14.1  | 2       | 51.0    | 0       | 0.0     | 0       | 0.0   | 0       | 0.0     | 42          | 68.8        |
| 1998 | 0     | 0.0   | 78      | 8.5   | 6       | 12.0  | 2       | 46.0    | 0       | 0.0     | 0       | 0.0   | 0       | 0.0     | 86          | 66.5        |
| 1999 | 0     | 0.0   | 61      | 8.1   | 11      | 20.7  | 0       | 0.0     | 0       | 0.0     | 0       | 0.0   | 0       | 0.0     | 72          | 28.9        |
| 2000 | 0     | 0.0   | 34      | 4.1   | 8       | 15.1  | 0       | 0.0     | 0       | 0.0     | 0       | 0.0   | 0       | 0.0     | 42          | 19.1        |
| 2001 | 0     | 0.0   | 57      | 7.8   | 13      | 17.8  | 0       | 0.0     | 0       | 0.0     | 0       | 0.0   | 0       | 0.0     | 70          | 25.6        |
| 2002 | 0     | 0.0   | 33      | 4.4   | 7       | 13.1  | 2       | 41.0    | 0       | 0.0     | 0       | 0.0   | 0       | 0.0     | 42          | 58.5        |
| 2003 | 0     | 0.0   | 28      | 3.7   | 5       | 7.2   | 1       | 31.7    | 0       | 0.0     | 0       | 0.0   | 0       | 0.0     | 34          | 42.6        |
| 2004 | 0     | 0.0   | 63      | 7.2   | 6       | 12.4  | 1       | 19.2    | 0       | 0.0     | 0       | 0.0   | 0       | 0.0     | 70          | 38.8        |
| 2005 | 0     | 0.0   | 14      | 2.0   | 4       | 21.0  | 1       | 26.0    | 0       | 0.0     | 0       | 0.0   | 0       | 0.0     | 19          | 49.0        |
| 2006 | 0     | 0.0   | 101     | 14.7  | 10      | 15.0  | 1       | 34.0    | 0       | 0.0     | 0       | 0.0   | 0       | 0.0     | 112         | 63.7        |
| 2007 | 0     | 0.0   | 32      | 4.6   | 16      | 38.9  | 3       | 76.5    | 0       | 0.0     | 0       | 0.0   | 0       | 0.0     | 51          | 120.0       |
| 2008 | 0     | 0.0   | 25      | 3.6   | 11      | 13.8  | 1       | 90.0    | 0       | 0.0     | 0       | 0.0   | 0       | 0.0     | 37          | 107.4       |
| 2009 | 0     | 0.0   | 34      | 3.7   | 6       | 5.0   | 0       | 0.0     | 0       | 0.0     | 0       | 0.0   | 0       | 0.0     | 40          | 8.7         |
| 2010 | 0     | 0.0   | 19      | 2.1   | 8       | 17.3  | 1       | 23.0    | 0       | 0.0     | 0       | 0.0   | 0       | 0.0     | 28          | 42.3        |
| 2011 | 0     | 0.0   | 30      | 4.5   | 12      | 17.3  | 0       | 0.0     | 0       | 0.0     | 0       | 0.0   | 0       | 0.0     | 42          | 21.8        |
| 2012 | 0     | 0.0   | 31      | 3.5   | 10      | 23.0  | 1       | 80.0    | 1       | 310.0   | 0       | 0.0   | 0       | 0.0     | 43          | 416.5       |
|      | 1,795 | 0.0   | 1,564   | 170.6 | 554     | 932.8 | 58      | 1,539.9 | 10      | 1,502.0 | 2       | 787.0 | 2       | 2,588.0 | 3,985       | 7,520.3     |

| Size Class Code         | Fires        |              |               | Acres          |              |             |
|-------------------------|--------------|--------------|---------------|----------------|--------------|-------------|
|                         | Total        | Average/Year | % of Total    | Total          | Average/Year | % of Total  |
| (S) Spot                | 1,795        | 42.7         | 45.0%         | 0.0            | 0.0          | 0.0%        |
| (A) .25 or less         | 1,564        | 37.2         | 39.2%         | 170.6          | 4.1          | 2.3%        |
| (B) .26 through 9.9     | 554          | 13.2         | 13.9%         | 932.8          | 22.2         | 12.4%       |
| (C) 10 through 99.9     | 58           | 1.4          | 1.5%          | 1,539.9        | 36.7         | 20.5%       |
| (D) 100 through 299.9   | 10           | 0.2          | 0.3%          | 1,502.0        | 35.8         | 20.0%       |
| (E) 300 through 999.9   | 2            | 0.0          | 0.1%          | 787.0          | 18.7         | 10.5%       |
| (F) 1000 through 4999.9 | 2            | 0.0          | 0.1%          | 2,588.0        | 61.6         | 34.4%       |
| <b>Total</b>            | <b>3,985</b> | <b>94.9</b>  | <b>100.0%</b> | <b>7,520.3</b> | <b>179.1</b> | <b>100%</b> |

# 102 Year Fire Occurrence





## Airplane Usage on Fires

| Program           | Cessna185 53083 | Super Cub 1679P | Total |
|-------------------|-----------------|-----------------|-------|
| Protecon          | 139.3           | 0.9             | 140.2 |
| Corp Of Engineers | 27.2            | 14.3            | 41.5  |
| Maintenance       | 2.2             | 0.7             | 2.9   |
| GSA Acquisition   | 0               | 0               | 0     |
| Suppression       | 22.92           | 2.48            | 25.4  |
| Total Hours       | 191.62          | 18.38           | 210   |
| % of Total        | 91.25%          | 8.75%           | 100%  |

## Equipment Usage on Fires

| ENGINE USE ON FIRES |            |            | PUMP USE ON FIRES |            |            |
|---------------------|------------|------------|-------------------|------------|------------|
| TYPE                | # OF FIRES | % OF FIRES | TYPE              | # OF FIRES | % OF FIRES |
| Type 2              | 8          | 19%        | 1 1/2" Homelite   | 18         | 43%        |
| Type 4              | 21         | 50%        | Sliptank          | 15         | 36%        |
| Type 6              | 15         | 36%        | 1" Waterbug       | 2          | 5%         |
| Type 7              | 42         | 100%       | 3"                | 1          | 2%         |
| ATV                 | 2          | 5%         | Mark 3            | 1          | 2%         |
| Dozer               | 4          | 10%        |                   |            |            |



# Detection Report 2012

---



|   | NUMBER | PERCENT |
|---|--------|---------|
| Fires First Discovered By Lookouts              | 3      | 6.98%   |
| Fires First Discovered By Air Patrol            | 4      | 9.30%   |
| Fires First Discovered By Others                | 33     | 76.74%  |
| Fires First Discovered By Association Employees | 3      | 6.98%   |

| REPORT TIME TO FIRST ATTACK |            |
|-----------------------------|------------|
|                             | # OF FIRES |
| 0 - 15 minutes              | 1          |
| 15 - 30 minutes             | 11         |
| 30 - 60 minutes             | 16         |
| 1 - 1 1/2 hours             | 2          |
| 1 1/2 - 3 hours             | 9          |
| 3 - 5 hours                 | 1          |
| 5 - 8 hours                 | 0          |
| 8 - 12 hours                | 1          |
| 12 - 24 hours               | 0          |
| 24 + hours                  | 2          |
| TOTAL                       | 43         |

| TIME REPORTED UNTIL FIRE OUT |            |
|------------------------------|------------|
|                              | # OF FIRES |
| 0 - 1 hour                   | 1          |
| 1 - 2 hours                  | 0          |
| 2 - 4 hours                  | 1          |
| 4 - 8 hours                  | 0          |
| 8 - 12 hours                 | 0          |
| 12 - 24 hours                | 6          |
| 1 - 2 days                   | 6          |
| 2 - 3 days                   | 12         |
| 3 - 5 days                   | 13         |
| 5 - 10 days                  | 0          |
| 10 days +                    | 4          |
| TOTAL                        | 43         |



# Burning Permits 2012

---

|              | <b>BURN<br/>BARREL</b> | <b>YARD<br/>WASTE</b> | <b>FIELD<br/>BURNING</b> | <b>LOGGING<br/>SLASH</b> | <b>SPECIAL<br/>USE</b> | <b>TOTAL</b> |
|--------------|------------------------|-----------------------|--------------------------|--------------------------|------------------------|--------------|
| SPRING       | 4                      | 93                    | 18                       | 34                       | 18                     | 167          |
| SUMMER       | 12                     | 35                    | 8                        | 1                        | 8                      | 64           |
| FALL         | 7                      | 24                    | 17                       | 5                        | 17                     | 70           |
| <b>TOTAL</b> | <b>23</b>              | <b>152</b>            | <b>43</b>                | <b>40</b>                | <b>43</b>              | <b>301</b>   |

# Fire Occurrence Comparison

---

|                       | <b>LIGHTNING</b> | <b>HUMAN - CAUSED</b> |
|-----------------------|------------------|-----------------------|
| Past 101 Year Average | 78.68            | 38.61                 |
| 2012 Fire Season      | 22               | 21                    |

# Fuel Classifications

---

## 77 Day Statistical Fire Season July 1 - September 15

| Fuel Model                      | <u>Before</u> | <u>Statistical</u> | <u>After</u> | <u>SEASON TOTAL</u> |
|---------------------------------|---------------|--------------------|--------------|---------------------|
| (A) Annual Grasslands & Forbes  | 2             | 4                  | 0            | 6                   |
| (C) Long Needle Pine with Grass | 0             | 3                  | 0            | 3                   |
| (G) Natural Heavy Down & Dead   | 1             | 3                  | 0            | 4                   |
| (H) Closed Canopy Fir           | 0             | 8                  | 1            | 9                   |
| (I) Heavy Slash                 | 0             | 3                  | 0            | 3                   |
| (J) Medium Slash                | 1             | 4                  | 0            | 5                   |
| (K) Light Slash                 | 0             | 2                  | 0            | 2                   |
| (L) Perennial Grasslands        | 0             | 2                  | 1            | 3                   |
| (T) Sagebrush & Grass           | 0             | 0                  | 0            | 0                   |
| (U) Pine with Needle Understory | 0             | 1                  | 1            | 2                   |
| (F) Low Brush and Forbes        | 1             | 5                  | 0            | 6                   |
| <b>TOTAL</b>                    | <b>5</b>      | <b>35</b>          | <b>3</b>     | <b>43</b>           |

# Monthly Precipitation Comparison 2012

---

## TAKEN AT ELK RIVER, IDAHO

|                   | May   | June | July | August | September | October |
|-------------------|-------|------|------|--------|-----------|---------|
| Rainfall (inches) | 2.05  | 5.21 | 1.27 | 0.00   | 0.00      | 5.71    |
| 59 Year Average   | 2.60  | 2.33 | 0.98 | 1.13   | 1.65      | 4.18    |
| Departure         | -0.55 | 2.88 | 0.29 | -1.13  | -1.65     | 1.53    |

## TAKEN AT HEADQUARTERS, IDAHO

|                   | May  | June | July  | August | September | October |
|-------------------|------|------|-------|--------|-----------|---------|
| Rainfall (inches) | 3.43 | 5.10 | 0.54  | 0.05   | 0.00      | 5.20    |
| 67 Year Average   | 2.87 | 2.83 | 1.30  | 1.40   | 1.82      | 2.65    |
| Departure         | 0.56 | 2.27 | -0.76 | -1.35  | -1.82     | 2.55    |



# Log Production 2012

---

Total log production from operators holding contracts under Forest Master Contract: Not Available

Total log production from operators holding agreement under Surety Bond: 181,887,990 BF

Total log production from operators under Holdback Option 2: 4,906,033 BF

Total log production from operators under Option 1: 254,037 BF

---

**187,048,060 BF**

